



#### Methanex Corporation

1800 Waterfront Centre  
200 Burrard Street Vancouver,  
BC Canada V6C 3M1  
General Inquiries +1 800 661 8851  
(Toll-free in North America)  
+1 604 661 2600 (Phone)  
+1 604 661 2676 (Fax)  
sustainability@methanex.com



#### Asia

Beijing: +86 10 8440 0319  
Shanghai: +86 21 6023 1000  
Hong Kong: +852 2918 1398  
Japan: +81 3 6807 3920  
Korea: +82 2 598 2051

#### Europe

Belgium: +32 2 352 0670

#### Middle East

Egypt: +20 25 865 350  
United Arab Emirates: +9714 438 0299

#### North America

Medicine Hat, Canada: +1 403 527 141  
Vancouver, Canada: +1 604 661 2600  
Dallas, USA: +1 972 702 0909  
Geismar, USA: +1 225 402 0300

#### Oceania

New Zealand: +64 6 754 9700

#### South America

Trinidad & Tobago: +868 679 4400  
Punta Arenas, Chile: +56 61 271 2218  
Santiago, Chile: +56 22 374 4000

Methanex is the world's largest producer and supplier of methanol to major international markets in Asia Pacific, North America, Europe and South America. Headquartered in Vancouver, Canada, Methanex currently operates production sites in Canada, Chile, Egypt, New Zealand, the United States, and Trinidad and Tobago. The company's global operations are supported by an extensive global supply chain of terminals, storage facilities and the world's largest dedicated fleet of methanol ocean tankers. To learn more, visit us at [www.methanex.com](http://www.methanex.com).

[www.methanex.com](http://www.methanex.com)

## 2020 Sustainability Highlights

# About Methanex

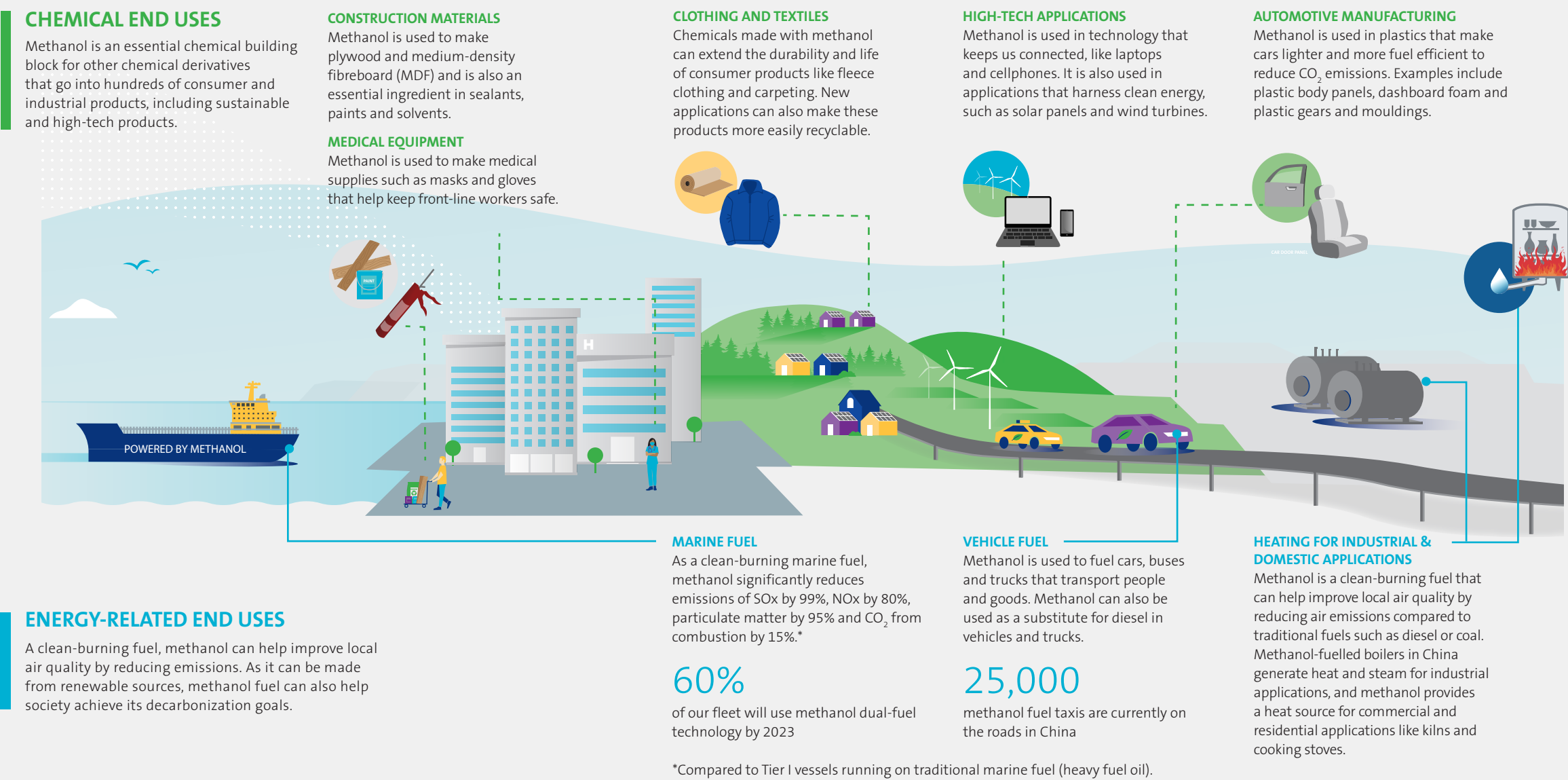
Methanex is the world’s largest producer and supplier of methanol to major international markets in Asia Pacific, North America, Europe and South America. Headquartered in Vancouver, Canada, we currently operate production sites in Canada, Chile, Egypt, New Zealand, Trinidad and Tobago, and the United States. Our global operations are supported by an extensive global supply chain of terminals, storage facilities and the world’s largest dedicated fleet of methanol-fuelled ocean tankers.

At Methanex, we care deeply about the people and the environment in which we live, work and play. The well-being of our stakeholders is a key priority and we believe our business should have a positive impact on people’s lives. In alignment with our commitment to the Responsible Care Ethic and Principles for Sustainability, a sustainability initiative recognized by the United Nations, we choose to act responsibly in everything we do and wherever we do business.



## Societal Benefits of Methanol

Methanol is an essential ingredient of our day-to-day life. A clear, colourless, biodegradable liquid, methanol is used as a chemical building block to produce hundreds of everyday products that enhance our quality of life. Methanol is also an innovative, clean-burning energy solution. For more than 100 years, methanol has been safely shipped, handled and used in a variety of applications around the world.



### Essential chemistry for our quality of life

As society transitions to more sustainable products and practices, methanol and other chemicals can play an important role in supporting society’s transition to a low-carbon, circular economy. For example, methanol is a chemical building block in materials used to construct and insulate our homes, making them more energy efficient and helping to reduce emissions. It’s also used to produce solar panels and wind turbines, as well as plastic automotive components that help make cars lighter and more energy efficient, reducing their CO<sub>2</sub> emissions.

### A low-emission “future-proof” fuel

As a liquid fuel, methanol powers cars, buses, trucks and ships that transport people and goods around the world. Methanol is a cost-effective, clean-burning fuel that significantly reduces air emissions of sulphur oxides (SO<sub>x</sub>), nitrogen oxides (NO<sub>x</sub>) and particulate matter produced by engine emissions, which can help improve local air quality compared to traditional fuels. Today, methanol is most commonly produced on a commercial scale from natural gas. As methanol can also be made from renewable sources, such as municipal waste, biomass and recycled carbon dioxide, it can provide a future pathway to renewables and support society’s decarbonization goals. To learn more about how Methanex makes methanol from natural gas, our investments in renewable methanol and the alternative ways to produce methanol, see our full 2020 Sustainability Report.



# Care for the Environment

We strive to minimize our environmental impact through initiatives that reduce greenhouse gas and other air emissions; efficiently using resources such as natural gas, energy and water; and preventing spills and minimizing waste from our operations.

Our operations generate emissions both during the methanol production process and when we ship methanol to our customers worldwide through our Waterfront Shipping subsidiary. We are committed to playing an active role in society's transition to a low-carbon economy by seeking ways to improve our energy efficiency and lower the CO<sub>2</sub> emissions from our operations. For details on our strategies for reducing CO<sub>2</sub> emissions from our operations, see our full 2020 Sustainability Report. A few highlights from the year include:

- Obtaining International Sustainability and Carbon Certification for biomethanol production in the US, enabling sales to European customers under the Renewable Energy Directive II, which sets targets for energy from renewable sources. We achieved this certification by producing biomethanol at two of our Geismar plants using biomethane (renewable natural gas) from municipal solid waste and other sources.
- Commissioning eight new lower-emission, methanol dual-fuel vessels to add to the Waterfront Shipping fleet. From 2016 – when the first methanol-fuelled vessels joined the Waterfront Shipping fleet-to the end of 2020, Waterfront's use of methanol marine fuel has resulted in emissions reductions of approximately 23,000 MT (million tonnes) of CO<sub>2</sub>, 6,600 MT of NOx, 3,600 MT of SOx and 500 MT of particulate matter.
- Producing more than 59,000 tonnes of low-carbon methanol at our Medicine Hat plant (approximately 12 per cent of the plant's 2020 production) by using captured CO<sub>2</sub> from a neighbouring industrial facility that would otherwise be emitted to the atmosphere.



# Safe Work

We care deeply about our people, communities and the environment in which we live, work and play. Our number one priority is making sure all of our team members go home safe, every day.

We are dedicated to providing safe workplaces for our team members and maintaining safe manufacturing processes to protect the environment and our surrounding communities. In 2020, we successfully completed turnarounds (major planned maintenance) at our plants in Trinidad and Medicine Hat, a significant accomplishment given the challenging pandemic environment and a testament to the agility of our team.

**Successful turnarounds in Medicine Hat and Trinidad during COVID-19**  
In October, our Medicine Hat team completed a turnaround that consisted of 44 projects (including installation of new low-NOx burners and upgrades to the reformer) over nearly 60 days, requiring approximately 1,300 work orders and almost 400,000 hours of work. In Trinidad, we completed our turnaround in November (with projects that included upgrades to the water heater and auto thermal reformer) over a 50-day period and requiring more than 750,000 hours of work.

We successfully completed these turnarounds – which required heightened safeguards and protocols due to COVID-19 – by working collaboratively with our contractors and partners as One Team.



Methanex facility in Medicine Hat, Alberta



Trinidad team members during Atlas Plant Turnaround

# Product Safety

We are dedicated to minimizing risks during all phases of methanol transportation, distribution, storage and use.

We share methanol safe-handling knowledge with all stakeholders in our supply chain and beyond, including our customers and their downstream end-users, emergency responders, industry associations and governments. A highlight in 2020 included receiving a Grand Slam Award from the Association of American Railroads for our 2019 rail performance in North America for the fifth year in a row. The award recognizes our annual achievement of zero non-accidental releases while transporting, loading or unloading our methanol product.



# People Practices

Our team members are our greatest asset and central to everything we do. We aim to attract and retain the best and the brightest, and our thriving global culture enables us to work together as One Team across functions, regions and disciplines.

We maintain our industry leadership position by continuously growing and developing our people through a unique combination of on-the-job learning experiences, coaching and mentoring, and formal development opportunities. We continue to evolve our integrated people and culture programs, with a particular emphasis on strategic workforce and succession planning, learning and development, competitive compensation and driving diversity and inclusion.



# Diversity and Inclusion

At Methanex, we strive to provide an inclusive work environment where diversity is valued and sought after and all global team members are encouraged and supported to reach their full potential. Our team members span 11 countries, speak different languages, represent different cultures and have different backgrounds, experiences and perspectives. Valuing diversity and inclusion (D&I) means embracing our differences as strengths and recognizing how this contributes to our competitive advantage. In 2020, we created a taskforce to advance our approach to D&I and to lay the foundation for the development of an integrated strategy through our newly established Global D&I Council.



# Support for Communities

In 2020, Methanex donated **US\$1.7 million** and almost **7,500 hours** of employee time (together valued at over one per cent of our adjusted net income over the last five years) to community efforts around the world.

We believe our business should have a positive impact on people’s lives and we aim to be a good neighbour and valued corporate citizen by creating positive and sustainable impacts in our communities.

Our community engagement efforts help us understand community interests, communicate information about our product and business activities, and address any community concerns. We do this primarily through Community Advisory Panels, as well as stakeholder associations, open house days, community projects, seminars, community surveys and public meetings.

In addition to creating jobs and economic opportunities, we invest in regions where we have a significant presence to build and support healthy communities that are great places to live and work. Our community investments include partnering with employees through a matching grants program; financial assistance for health, safety and environmental initiatives; and support for regional educational development and scholarships. Given the significant impact that the COVID-19 pandemic has had on individuals and communities, our 2020 community investment initiatives in all regions prioritized COVID-19 emergency relief and assistance. Here are just a few examples of the different ways in which we supported our communities in 2020.



**Vancouver, Canada:** We donated \$10,000 to support KidSafe, a local organization that provides 450 vulnerable children and youth with the safety, nutrition and educational programming they need during regular school breaks and during the COVID-19 school closures.



**Geismar, US:** We contributed \$12,000 to 225 Gives, a fundraising effort to support the local non-profit sector, which was experiencing increased demand and reduced donations due to COVID-19.



**Belgium:** We equipped every employee of Centrum Ganspoel (a residential centre for children, adolescents and adults with visual and neuro-motor impairments) with a face shield, and our team members participated in a virtual charity run to support “Run To Walk Again,” an organization committed to the mental and physical well-being of people with a physical disability.



**China:** We provided scholarships to nine outstanding students from the Beijing University of Chemical Technology (BUCT). We have provided scholarships to BUCT students for more than 10 years, promoting the principles of Responsible Care and supporting recruitment of top talent in the chemicals field.



**New Zealand:** We initiated a three-year partnership with Taranaki Rescue Helicopter, contributing \$75,000 per year of support for a dedicated rescue helicopter for the people in the Taranaki province.



**Chile:** Partnering with the school board and a local NGO, we provided 270 tablets and Internet service to vulnerable high school students so they could continue studying when schools closed. We imported 7,000 medical-grade face masks for hospital personnel when these were locally unavailable, and we also distributed 700 food boxes to families in need.



**Egypt:** We partnered with the Egyptian Food Bank to provide food boxes to 10,000 vulnerable families in Damietta who were significantly impacted by COVID-19 lockdowns. Methanex Egypt also matched employee contributions to the Egyptian Food Bank campaign, ensuring an additional 2,686 families received food boxes.



**Dallas, US:** We organized a food drive to support the North Texas Food Bank, which saw unprecedented demand for food assistance due to the pandemic and its related economic impacts.



**Medicine Hat, Canada:** We organized a community fundraiser that raised \$31,620 for the Medicine Hat and District Food Bank when their demand increased significantly during the COVID-19 pandemic.



**Trinidad:** We donated 30 new laptop computers to the Ministry of Education’s “Adopt-a-School” project, which supports online learning by providing computers to children in fence-line communities. Through partnerships with other organizations, we provided daily meals over a three-month period to 150 health-care workers, provided 100 community care packages to impacted families, and donated equipment and supplies to outfit a local COVID-19 treatment facility.